



SCALE75<sup>®</sup>

ENVIRONMENTS

WINTER



soilworks

## Step **one**

### USE WINTER GROUND AS A BASE

**Winter Ground** is an acrylic paste specially designed for snowy and muddy terrains



**SAP-009**

1. Apply *Winter Ground* (SAP-009) on the terrain surface with a flat paintbrush (Sceneries & Terrains II SBR-05). Spread the product with a rounded paintbrush (Sceneries & Terrains I SBR-04).



**20-30 min.**

*Drying time may be reduced  
by applying airflow*



**Tip**

*Use the paintbrush  
to spread the paste  
with gentle strokes*



## Step **two**

### USE DIFFERENT COLORS

These **six colors** are select to give different shades to base color



SW-07



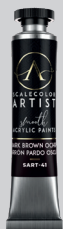
SW-20



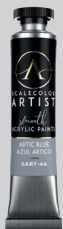
SW-51



SART-39



SART-41



SART-44



1. You can combine different colors of the set to give the ground different tonalities. To do so, use a rounded-tipped paintbrush (Weathering I SBR-06).



## Step **three**

### **PIGMENTS: ADD COLOR AND REALISM**

**Pigments colors** are really useful to give your terrains realistic effects



**SFP-01P**



**SPG-04**

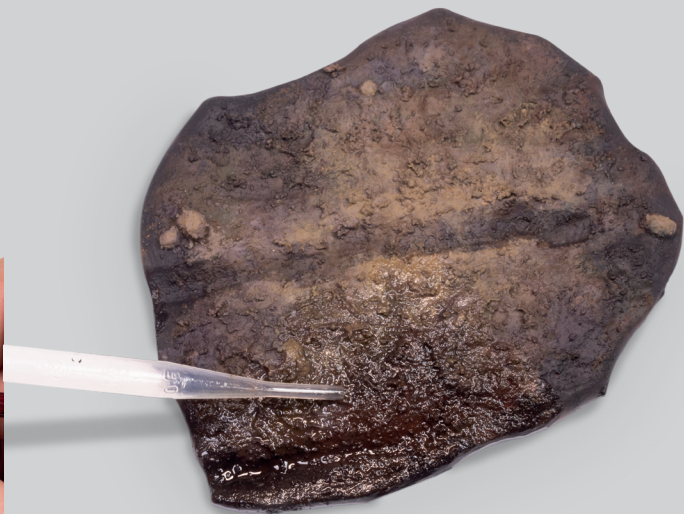


**SPG-07**

1. The pigment gives an earthy finish to the applied areas, making the terrains more realistic. In this photo, you can see how the *Reddish Brown* (SPG-04) is applied. Use a round pointed tip paintbrush (*Weathering I SBR-06*).



- 2.** Use the *Pigment Fixer* to fix the pigments to the ground. They darken while wet, but they will regain their color when they have dried.



**15-20 min.**

*Drying time may be reduced by applying airflow*



**Tip**

*For a greater variety of colors mix both pigments together*



## Step **four**

### MUD EFFECT: ANOTHER WAY TO TEXTURIZE

**Mud Effect** is a neutral colored acrylic resin ideal for mixing with other colors



**SR-01P**



**SGR-001**



**SCC-004**



**SWA-02**



**SAP-008**



1. Apply *Mud Effect* mixed with the pigments (in this case *Reddish Brown* (SPG-04) and spread it over the surface.



2. Texturize the mixture, dabbing lightly with a rounded-tipped paintbrush.



### Warning

Take care with brushes.  
This process could  
deteriorate your brushes



### Tip

*Mud Effect is ideal for mixing with pigments and/or acrylic paints to achieve the color required as a base for grounds. If more volume is required add 'plaster'*



**20-30 min.**

Drying time may  
be reduced by  
applying airflow



- 3.** Add Gravel (SGR-001) to *Mud Effect* while it's fresh, so it will be fixed once it's dry. Color it to give it the appearance of rocks.



- 4.** Add the *Soiled Snow* (SAP-008) and vegetation. Light shades with *Artic Blue* (SART-44), intermediate shades with *Wood* (SART-39) and *US Dark Brown* (SC-51). Shadows with *Dark Brown Ochre*.





### Tip

*Experiment!! And get different types of finish with Artificial Snow (SCC-004) by mixing it with Water & Puddles (SWA-02)*



- 1.** Mix the *Water & Puddles* in a container (SWA-02) with the *Artificial Snow* (SCC-04). Make sure the result is dense.



- 2.** Apply the snow on the terrain with a round pointed tip paintbrush. Get a wetter effect by applying the finishing touches on *Water & Puddles* (SWA-02).

## Step **five**

### **SOILED SNOW: LET IT SNOW**

**Soiled snow** is a paste designed for creating snowy soil



**SAP-008**



**24h.**

While the product is fresh, take advantage of it to make marks on the terrain (footprints, treads, etc.)

- 2.** Melt the paste with the *Water & Puddles* at the edges to create a smooth transition, making the snow less voluminous in those areas.



- 1.** Apply the *Soiled Snow* spreading it out with a wooden stick until it covers the whole surface where you want to add the snow texture.



## Step **six**

### **SPLASH TERRAINS WITH WATER & PUDDLES**

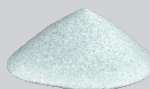
With this **acrylic liquid** you can reproduce any kind of water effects



**SWA-02**



**SART-39**



**SCC-04**

- 2.** Mix the product with acrylic paint, in this case with Wood (SART-39).



- 1.** Pour Water & Puddles into a container.





**3.** Pour the mixture on the ground.

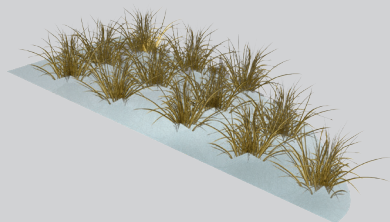
**4.** Sprinkle the Artificial Snow (SCC-04) on the Soiled Snow while it is still fresh to create a more realistic texture of freshly fallen snow.



## Step **seven**

### **TUFT BEIGE: A REAL WINTER VEGETATION**

**Tuft Beige** is vegetation special designed for your winter terrains



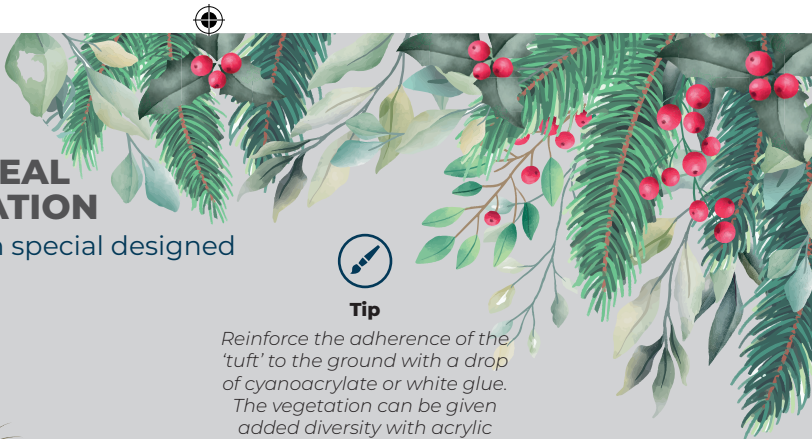
**050-43S**

- 1.** Add the vegetation to the ground with a pair of tweezers for greater accuracy. In this case, each tuft has an adhesive, making it easier for the product to stick.



#### **Tip**

*Reinforce the adherence of the 'tuft' to the ground with a drop of cyanoacrylate or white glue. The vegetation can be given added diversity with acrylic paints and/or mixing different 'tuft' models*



## Step **eight**

### **FINAL DETAILS: WINTER IS COMING**

Use the different set products to get the perfect terrain

- 2.** You can use paint to stain the snow and recreate the effect of dirty snow.

- 1.** Apply *Water & Puddles* (unmodified) as many times as necessary until the desired effect is achieved.

- 3.** Add light and dark colors at snow and puddle transitions. It will provide a more realistic finish.



## Related **Products**

### **SOILWORKS & WARFRONT PRODUCTS**

Visit our web: [Scale75.com](http://Scale75.com)



**OIL WASH SWE-00/09**



**PIGMENT COLORS SPG-01/10**



**ACRYLIC PUTTY SCC-010**



**ODORLESS THINNER SWTH-001 &  
TERRAIN FIXER SFT-001**



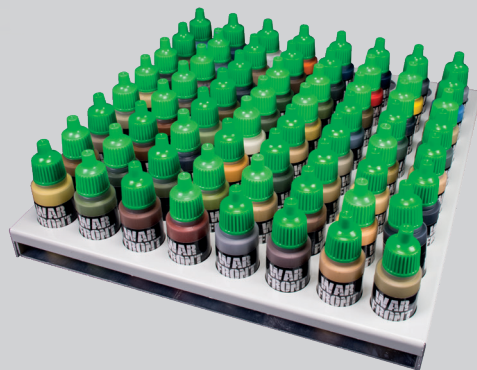
**PASTES SAP-004/009 &  
WATER & PUDDLES SWA-02**



**MUD EFFECT SR-01P &  
PIGMENT FIXER SFP-01P**



**WET SWA-01**



**WARFRONT RANGE**



# soilworks

C/ Cadmio, 12  
28500 Arganda del Rey - Madrid - SPAIN  
T: + 34 918 707 471  
E: [info@scale75.com](mailto:info@scale75.com)